

Tuesday November 22, 2024

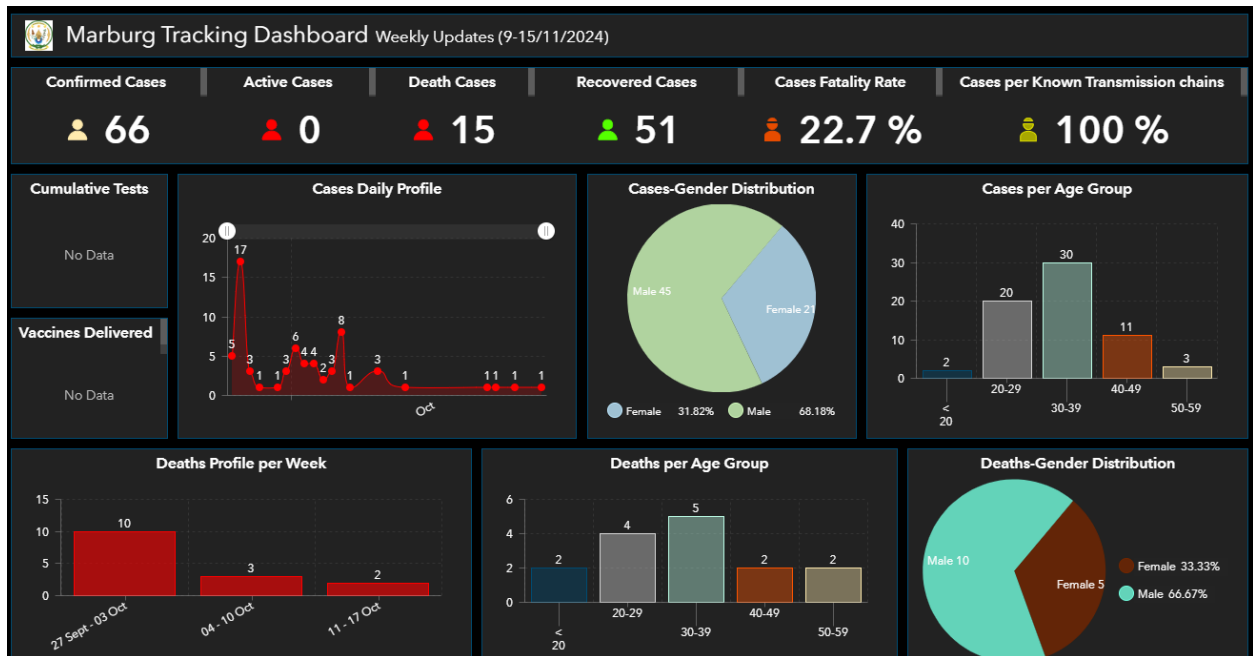
November Region 2 RESPTC Newsletter

REGION 2 RESPTC PARTNER COMMUNITY NEWSLETTER

During this season of Thanksgiving, the Region 2 Regional Emerging Special Pathogen Treatment Center (RESPTC) is grateful for our special pathogen preparedness partners!

The Region 2 RESPTC at NYC Health + Hospitals/Bellevue Hospital serves as a National Special Pathogen System (NSPS) Level 1 facility and leads special pathogen preparedness efforts for New York, New Jersey, Puerto Rico, and the U.S. Virgin Islands. Learn more about RESPTC updates, resources, and partner events below:

SPECIAL PATHOGEN NEWS



Source: [Rwanda Biomedical Centre](#)

Rwanda Counting Down Days to Declare End to Marburg Outbreak

Rwanda discharged their last Marburg patient on November 8th, 2024 and is currently counting down the days to officially declare the end of this Marburg outbreak. Since the outbreak was declared on September 27th, [66 cases and 15 deaths](#) were recorded in Rwanda, with health workers accounting for almost 80% of cases. Rwanda's rapid response successfully resulted in no community transmission to date.

Rwandan Women Health Workers Share Their Experience

Firew et al. (2024) shared the experience of Rwandan women at the front line of the Marburg response in a recent Lancet [article](#). These healthcare heroes shared details about how the recent response impacted their lives and highlighted gender inequities in special pathogen preparedness. The authors closed their article by sharing: "Together, we are resilient, and together, we will continue to shape the future of health care in our communities."

New Highly Pathogenic Avian Influenza Cases in California and Oregon

The United States has confirmed 52 cases of avian influenza A virus since April 2024. California identified [five new cases](#) among farm workers last week and [Oregon declared their first human case](#) on November 15th.

Mpox Clade I identified in California

On November 16th, the CDC and the California Department of Public Health [confirmed](#) the first known case of clade I mpox in the U.S. in an individual who recently traveled from Eastern Africa. While clade II mpox cases are still continuing in our region, the risk of clade I transmission remains low in the U.S.

RESOURCE HIGHLIGHTS & UPCOMING EVENTS

November Travel Screening Country List

The New York City Health + Hospitals Travel Screening List reviews current special pathogen disease outbreaks that require prompt identification, isolation and/or specialized evaluation and management. This list, which may be found [here](#), can serve as a resource while screening patients.

Please see below for resources and symptom lists for current outbreaks.

Travel Screening Country List – November 2024



This document is not meant to be an exhaustive list but is focused on select, current special pathogen disease outbreaks that require prompt identification, isolation and/or specialized evaluation and management.

Country	Diseases with Active Cases	Surveillance Window (max time from exposure to symptom onset)	Case Definition and Guidance	PPE/Precautions
United States <ul style="list-style-type: none"> Iowa 	Lassa Fever	21 days	Lassa Fever Clinician Fact Sheet	Special Pathogens Level 2 VHF
Numerous Countries*	Measles	21 days	Measles Clinician Fact Sheet	Airborne + Contact + Standard
Numerous Countries <ul style="list-style-type: none"> Burundi Democratic Republic of the Congo Republic of the Congo Central African Republic Germany Rwanda Uganda United Kingdom United States (California) 	MPox, Clade Ia & Ib	21 days	Mpxo Clinician Fact Sheet	Special Pathogens Level 1
Nigeria	Lassa Fever	21 days	Lassa Fever Clinician Fact Sheet	Special Pathogens Level 2 VHF
Rwanda	Marburg	21 days	Marburg Clinician Fact Sheet	Special Pathogens Level 2 VHF
Recent Health Alerts/Advisories		General Notes and References for Local & National health alerts/advisories		
National	H5N1/Bird Flu:	The CDC continues to address a multistate outbreak of avian influenza A(H5N1) in dairy cows, poultry, and other animals in the U.S. Since April 2024, 52 human cases have been confirmed. Clinicians should consider H5N1 infection in patients with acute respiratory illness or conjunctivitis who have had recent contact with sick or dead animals, contaminated		

Current Infectious Disease Outbreaks for New York City Providers

The New York City Department of Health and Mental Hygiene (NYCDOHMH) offers a list of current infectious disease outbreaks as a resource for healthcare providers in New York City. Find the resource [here](#).

NETEC Viral Hemorrhagic Fever (VHF) Checklist

The Health Care Facility Viral Hemorrhagic Fever (VHF) Preparedness Checklist is a free tool to help facilities assess their readiness to identify, isolate, inform, and provide initial treatment for patients suspected or confirmed to have a VHF, like Marburg virus disease. Find the online checklist [here](#).

NETEC Podcast | H5N1 Wastewater Testing and Surveillance: Insights and Strategies

In this episode of Transmission Interrupted, Lauren Sauer, an associate professor at the University of Nebraska Medical Center and director of the Special Pathogens Research Network with NETEC, dives deep into the current state of H5N1 wastewater testing and surveillance with Dr. Jana Broadhurst. You can find "Transmission Interrupted" on your favorite podcast platform or learn more [here](#).

ASPR TRACIE Webinar | Crisis Standards of Care: Insights from COVID-19 and Recent Pharmaceutical Supply Challenges

DATE: January 15, 2025

TIME: 1:30 – 2:30 pm

DESCRIPTION: Speakers will cover topics including recognizing when your healthcare facility/system is operating under crisis standards of care and indicators that signal this transition, considerations for effectively managing care to ensure ethical and efficient decision-making, and lessons learned from staffing and supply challenges associated with the COVID-19 pandemic and other critical incidents.

[REGISTER HERE](#)

NYC Pandemic Response Institute Webinar | Leveraging Diverse Data Sources For Crisis Preparedness & Response

DATE: December 10, 2024

TIME: 12:30 – 5:30 pm

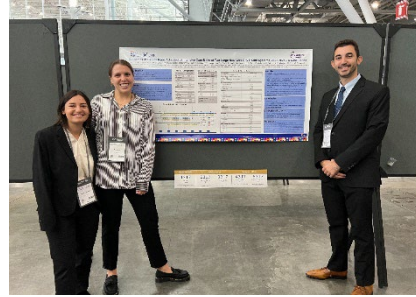
LOCATION: 601 W 125th St, New York, NY 10027

DESCRIPTION: Public health emergencies require rapid, informed decision-making, and leveraging diverse data sources is crucial to that process. The COVID-19 pandemic revealed both the potential and the challenges of utilizing non-traditional data sources, including issues around data privacy, interoperability, and collaboration across sectors. Join us to explore solutions to better integrate quantitative (e.g., cases, hospitalizations, vaccination rates), qualitative (e.g., interviews with healthcare workers, community feedback), and unstructured (e.g., social media/online activity, news articles) data during public health crises. Learn more [here](#).

REGION 2 NEWS

CHEST Conference

Members of Bellevue's Special Pathogens Program presented at the annual CHEST 2024 meeting this October. Melissa Achenbaum and Regan Britt presented their research poster entitled "Outcomes of Severe Mpox Admitted to Intensive Care Units at Two Large New York City Health Systems, 2022-2024 – A Case Series" which described factors leading to severe mpox disease amongst patients at the New York City Health + Hospitals and NYU Langone systems. Anthony Lo Piccolo presented the research poster "Institutional readiness to provide critical care to patients with viral hemorrhagic fever after the COVID-19 pandemic" assessing the readiness of Level 2 Special Pathogen Treatment Centers nationwide to provide critical care interventions to patients with viral hemorrhagic fevers. These presentations shared insights from Region 2 with a global audience.



Rochester Training

The Region 2 RESPTC Team visited Rochester to lead a Train-the-Trainer session on special pathogen response skills for the University of Rochester Medicine, an NSPS Level 2 facility. The training included special pathogen skills such as PPE donning and doffing, containment wraps, spills, and breaches. The training included attendees from three different University of Rochester Medicine hospitals as well as the New York State Department of Health.



Jennifer Ornt from University of Rochester | Noyes training on PPE donning and doffing.

OUTBREAK ADVISORIES AND RESOURCES

Marburg Virus Disease

Marburg is a highly infectious viral hemorrhagic fever that is clinically similar to Ebola. MVD is spread through contact with blood or bodily fluids of an infected individual. Learn more about transmission [here](#).

Early signs and symptoms include:

- fever,
- chills,
- malaise,
- headache,
- muscle aches,
- sore throat,
- chest pain,
- abdominal pain,
- vomiting,
- diarrhea, and
- maculopapular, erythematous rash.

Symptoms may progress to include:

- jaundice,
- inflammation of the pancreas,
- severe weight loss,
- delirium,
- shock,
- liver failure,
- massive hemorrhaging, and
- multiorgan failure.

Resources

- [CDC| Marburg Virus Disease Situation Summary](#)
- [NETEC Viral Hemorrhagic Fevers \(VHFs\) Matrix](#)
- [Health Care Facility Viral Hemorrhagic Fever \(VHF\) Preparedness Checklist](#)
- [EMS Guidelines for Marburg Virus Disease](#)
- [Infection Prevention and Control Measures for Marburg Virus Disease](#)

Mpox

The first U.S. case of Clade I mpox was identified in California this week and cases of mpox clade II continue to occur in our region. Historically, Clade I mpox causes

more severe illness than Clade II. Providers should test for mpox in any patient with compatible rash and symptoms and screen for recent travel to or close contact with someone who recently returned from the affected region. Please contact your local health department to arrange for Clade I testing if indicated.

Symptoms include:

- rash,
- fever,
- chills,
- swollen lymph nodes,
- exhaustion,
- muscle aches,
- headache, and/or
- respiratory symptoms

Source: [CDC Health Alert](#)

Resources

- [New York City Department of Health and Mental Hygiene \(NYCDOHMH\) mpox data and resources](#)
- [NETEC Webinar Series \(6/228/2024\)/Online Course: Mpox in 2024: Updates and Considerations for Frontline Staff](#)
- [Mpox in 2024: 10 Takeaways for Frontline Health Care Staff](#)

Measles

Measles cases are continuing to occur in our region. Please be aware of patients who have recently traveled abroad and who have symptoms consistent with measles, including:

- febrile rash illness,
- cough,
- coryza, and/or
- conjunctivitis

CDC Resources

- [Measles Symptoms and Complications](#)
- [CDC Resources for Public Health Professionals](#)

H5N1

Six more human cases of avian influenza A (H5N1) virus infection were reported in the United States last week, bringing the national total to 52 cases. A majority of cases are associated with exposure to infected poultry or dairy cows.

Providers should consider the possibility of H5N1 in patients who had contact with potentially infected sick or dead animals in the past week and show the following symptoms:

- fever,
- cough,
- sore throat,
- body aches,
- headaches,
- fatigue,
- eye redness (or conjunctivitis), and/or
- shortness of breath

Source: [CDC](#)

Providers should report any non-subtypeable influenza A cases to their Department of Health.

Resources

- [NETEC Webinar Series \(8/14/2024\): H5N1 Town Hall: Updates for Frontline Staff](#)
- [NETEC Laboratory Resources: Highly Pathogenic Avian Influenza \(HPAI\)](#)
- [CDC Bird Flu News and Spotlights](#)

New York State Reporting

To report sick or dead poultry in New York State, call the NYS Department of Agriculture and Markets at 518-457-3502.

REGION 2 TRAINING TIP OF THE MONTH

When you are training on special pathogen PPE donning, bring extra hair ties and headbands to assist trainees with long hair.

NOVEMBER COMMUNITY SPOTLIGHT | DR. MARY FOOTE



Dr. Mary Foote is an infectious disease physician working at the crossroads of public health, healthcare, and emergency management. She is the Medical Director for the Office of Emergency Preparedness and Response at the New York City (NYC) Health Department -- one of the largest public health agencies in the world – and she serves as a steering committee member for the Region 2 RESPTC. She joined the Health Department in 2015 to establish the special pathogen preparedness program and now leads all-hazards clinical preparedness efforts with a focus on building resilient health systems, improving access to care and mitigating health disparities during public health emergencies. Previously, she worked in academia and with non-governmental organizations on global health and tuberculosis projects domestically and in India, Peru, and Nicaragua.

Dr. Foote served on the front lines of many New York City outbreak responses, including mpox, COVID-19, measles, and Ebola, as a Director of Healthcare Systems Support. Her innovative work, such as the establishment of New York City’s Nurse Call Line and oral antiviral same-day pharmacy delivery program for COVID-19 and mpox, has influenced national public health policy and practice and was recognized by the NewYorkBIO COVID Hero of New York award. As a thought leader in improving public health response to emerging infectious diseases, she serves on multiple regional and national advisory groups to enhance readiness through a whole community approach. She earned her MD and MPH from the University of Arizona and completed a residency in Social Internal Medicine at Montefiore Medical Center in Bronx, New York, before going on to Emory University in Atlanta, Georgia to complete a fellowship in Infectious Diseases.

We want to highlight your work to prepare for and respond to special pathogen threats. If you have a special pathogen preparedness or response story, person, or team to spotlight, please send it to BellevueSPP@nychhc.org.

WHAT'S NEW ON THE REGION 2 RESPTC WEBSITE?

The Region 2 RESPTC website is a one-stop shop for all things related to special pathogen preparedness and response in New York, New Jersey, Puerto Rico, and the U.S. Virgin Islands. The team has updated the [Tools and Resource page](#) with new resources including the latest Travel Screening List and resources dedicated to the Marburg, Lassa, and H5N1 response. You can also read or re-read past newsletter issues [here](#).

[SUBSCRIBE TO OUR NEWSLETTER](#)